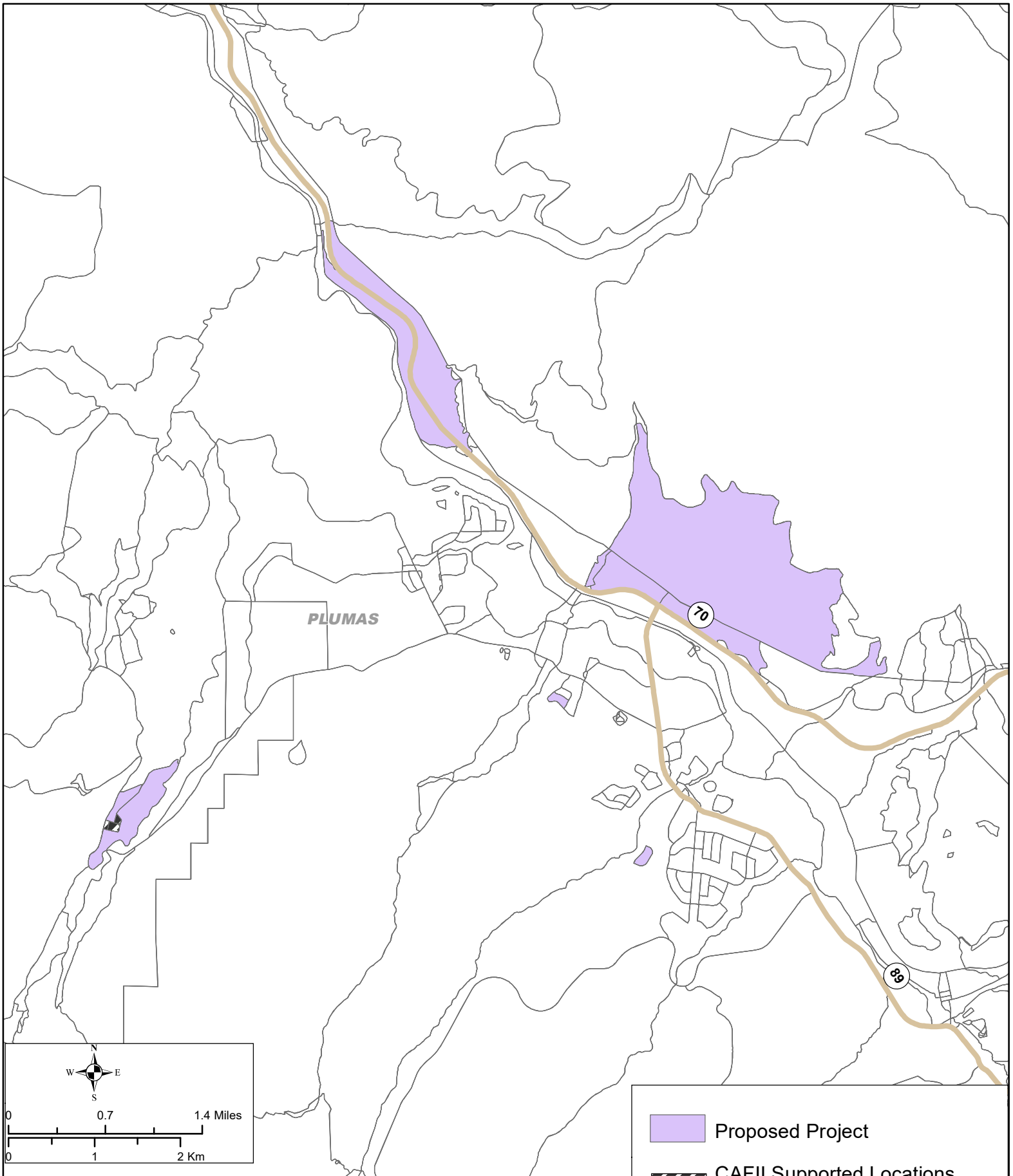






# STATE OF CALIFORNIA

## Plumas Sierra CASF Infrastructure Grant Application

### Plumas-Eureka-Johnsonville - May 1, 2019



Data Source:  
Service availability data submitted by California broadband providers and validated by the CPUC. Data as of December 31, 2017.  
Map created by the CPUC, Communications Division, CASF Infrastructure Group, May 16, 2019.

-  Proposed Project
-  CAFII Supported Locations  
CAFII Provider - AT&T