

## CASF Application – Delta

### Project Summary

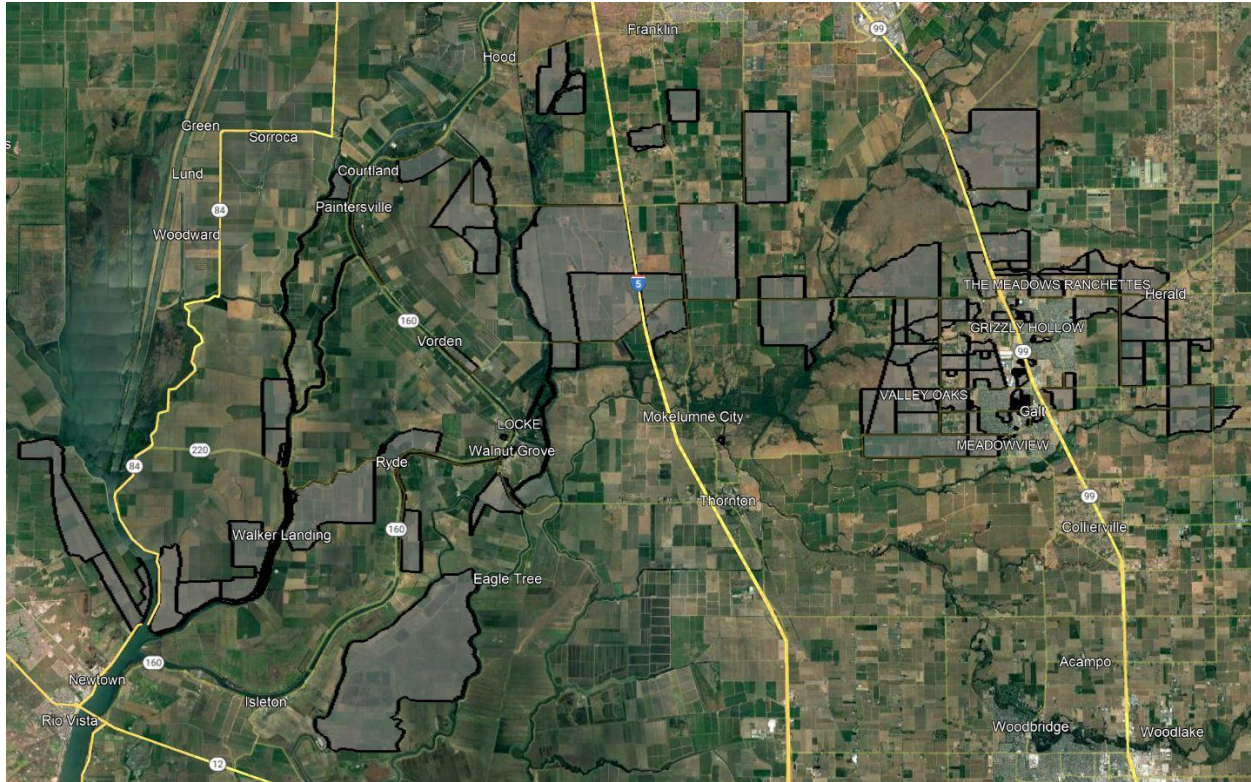
---

<b>Applicant:</b>	Digital Path, Inc. d/b/a DigitalPath, Inc. #1151
<b>Contact:</b>	Andrew Cardin Senior Vice President of Operations <a href="mailto:acardin@digitalpath.com">acardin@digitalpath.com</a>
<b>Project Title:</b>	Delta
<b>Location:</b>	Courtland, Walnut Grove, Walker Landing, Galt – Sacramento County Unincorporated Area – Solano County
<b>Type:</b>	hybrid last-mile/middle mile
<b>Grant Funds Requested:</b>	<b>\$932,133</b>

# Project Area Map



## California Interactive Broadband Map – Delta in Sacramento & Solano Counties



Census Block Boundaries

The Delta CASF Project will provide service to 253 Priority Eligible locations and 540 Eligible locations.  
793 total locations.

**Census Blocks:**

---

60670095011024	60670099001055	60670095022021	60670094031035
60952535013032	60670099001032	60670095031003	60670094031046
60670099001039	60670096531003	60670095024003	60670095011009
60670099004084	60670099001035	60670095033004	60670095011014
60670095011027	60670099001033	60670095041031	60670094031057
60670094031054	60670099001050	60670094101012	60670099001024
60670095011013	60952535013005	60670095031008	60670099001021
60670094031065	60670099001068	60670095033009	60670095011037
60670094031067	60670099001066	60670094062036	60670095011039
60670096531010	60670099001051	60670094031050	60670095011010
60670094081032	60670096531015	60670095021014	60670095011038
60670095033011	60670099001067	60670094081028	60670095011044
60670095033014	60670095012006	60670095021017	60670095021013
60670095033020	60670095033010	60670095011011	60670099003039
60670094062028	60670099001042	60670094031068	60670095021007
60670095033017	60670099001046	60670094091000	60670095011042
60670095033012	60952535013004	60670095011015	60670095021010
60670099004064	60670099002027	60670095011036	60670094081004
60952535013003	60670099002022	60670094102012	60670099001047
60670096531020	60670095033019	60670094031058	60670099002019
60952535013105	60670095011046	60670094102011	60670099001010
60952535013007	60670095032008	60670099003005	60670099003019
60670099001053	60670095031010	60670099002002	60670095021004
60952535013002	60670094103002	60670099001016	60670099001036
60952535013011	60670095011045	60670099001026	60670094091001
60670099004066	60670094101018	60670095011005	60670099001063
60952535013232	60670095031009	60670094062041	60670094081002
60670099003007	60670094081010	60670095011040	60670095023009
60952535013289	60670095024019	60670094031056	60670095021005
60670096533018	60670094103009	60670094062042	60670095021001
60670096533011	60670095041007	60670094031055	60670094081033
60670099004045	60670094062037	60670099003022	60670095021011
60670099001044	60670095041047	60670099004050	60670094081008
60670096533007	60670095041029	60670096531023	60670095022024
60670099001048	60670095021009	60670099003028	60670095021019
60952535013010	60670095022023	60670095021002	60670096531008

**Zip Codes:**

---

94571, 95615, 95632, 95638, 95641, 95680, 95690, 95693, 95757

According to the data available through the California Interactive Broadband Map:

313 locations have access equal to or less than 10 Mbps Down / 1 Mbps Up and 480 locations have access at less than 25 Mbps Down / 3 Mbps Up. This project will make speeds available of 100 Mbps downstream and 20 Mbps upstream.

The median household income of the project area is \$83,975.

There are 25 Community Anchor Institutions identified within the project area. None of these locations are listed as eligible or priority eligible.

There is no major infrastructure proposed in this Project.

The major equipment associated with this project is:

- High-capacity access points, generator, licensed microwave links.

Construction will take less than 18 months to complete.

The Delta Project is a hybrid last-mile/middle mile fixed wireless deployment utilizing 2 existing towers to deliver service to the households covered by this project.

Once completed, locations covered in this Project will have access to download speeds of 100 Mbps and upload speeds of 20 Mbps. Additional service tiers will be available.

Digital Path, Inc. believes this project to be categorically exempt from CEQA requirements based on the use of existing facilities and local building requirements.

Digital Path, Inc. is not disputing the California Interactive Broadband Map depiction of served status for the locations in this application.

Digital Path, Inc. is not seeking Ministerial Review.

The Middle-Mile component of this project will use an existing fiber connection.