

## CASF Application – South Butte

### Project Summary

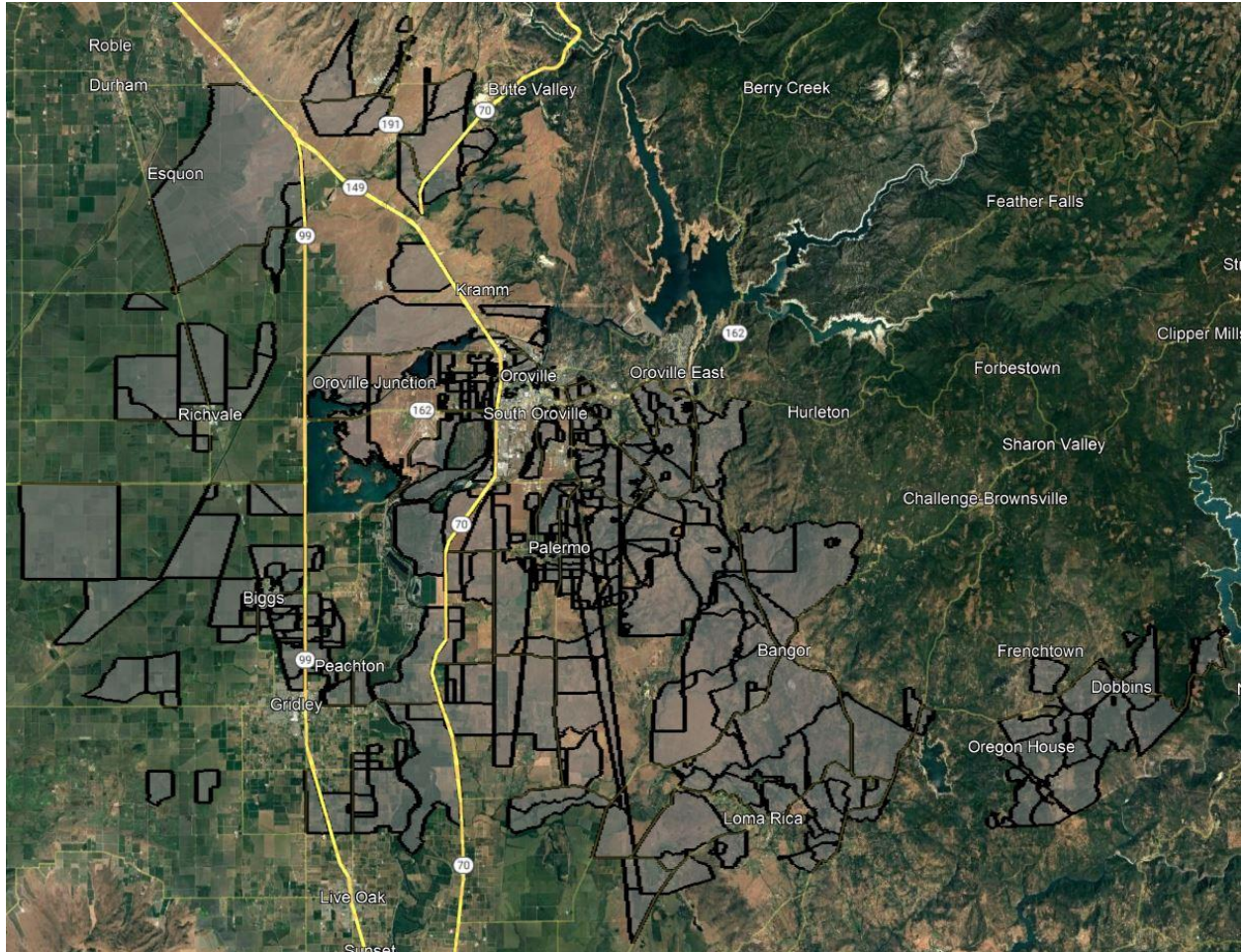
---

<b>Applicant:</b>	Digital Path, Inc. d/b/a DigitalPath, Inc. #1151
<b>Contact:</b>	Andrew Cardin Senior Vice President of Operations <a href="mailto:acardin@digitalpath.com">acardin@digitalpath.com</a>
<b>Project Title:</b>	South Butte
<b>Location:</b>	Butte Valley, Richvale, Oroville, Palermo, Bangor – Butte County Dobbins, Oregon House, Loma Rica – Yuba County
<b>Type:</b>	hybrid last-mile/middle mile
<b>Grant Funds Requested:</b>	<b>\$4,879,362</b>

# Project Area Map



## California Interactive Broadband Map – South Butte in Butte & Yuba Counties



Census Block Boundaries

The South Butte CASF Project will provide service to 1,182 Priority Eligible locations and 440 Eligible locations. 1,622 total locations.

**Census Blocks:**

---

60070015004009	60070032002016	60070036003085	60070025004020
60070022002056	60070032002059	60070036003159	60070025004044
60070028003030	60070032002037	60070036003149	60070025004056
60070032003055	60070032002048	60070036003003	60070025004033
60070033001049	60070032003020	60070036003175	60070026011007
60070033001074	60070033001054	60070036003148	60070026011004
60070033002008	60070033001072	60070037001020	60070026011005
60070033003031	60070033001065	60070037002038	60070026012000
60070034001022	60070033001042	60070037002059	60070026013002
60070036002027	60070033001060	61150410011043	60070026013004
60070037002081	60070033001051	61150410011009	60070026013003
61150411021040	60070033001050	61150410013007	60070026013000
60070015004014	60070033001004	61150410013004	60070026013001
60070015004036	60070033001073	61150410021046	60070027001032
60070022002068	60070033002035	61150410022022	60070027002002
60070022002042	60070033002014	61150410023015	60070027002004
60070023005048	60070033002030	61150411011111	60070027002001
60070023005046	60070033002032	61150411012034	60070027002013
60070023005047	60070033002031	61150411013020	60070027002005
60070023005053	60070033002021	61150411013023	60070027005018
60070023005054	60070033003046	61150411021010	60070027005014
60070025002016	60070033003033	60070015004032	60070028001001
60070025004065	60070033003047	60070015004012	60070028002024
60070026012001	60070033003063	60070015004037	60070028002030
60070030011002	60070033003062	60070015004010	60070028003009
60070030021023	60070033003043	60070015004000	60070028003012
60070030021031	60070034001007	60070022002054	60070028003025
60070030022013	60070034001008	60070022002055	60070028004014
60070031001021	60070034001037	60070022002041	60070028004015
60070032002000	60070034001000	60070022002050	60070028004002
60070032002062	60070034002023	60070022002052	60070028005012
60070032002003	60070035011001	60070022002037	60070028005011
60070032002018	60070035011025	60070023005042	60070029001013
60070032002025	60070035021030	60070023005055	60070029001023
60070032002068	60070036002031	60070023005049	60070029001017
60070032002057	60070036002050	60070023005060	60070029001025
60070032002042	60070036003125	60070023005024	60070029001005
60070032002050	60070036003158	60070023005041	60070029002009
60070032002053	60070036003122	60070025001003	60070029002002
60070032002005	60070036003167	60070025001001	60070029002007
60070032002049	60070036003061	60070025002013	60070029002004
60070032002061	60070036003072	60070025003001	60070030011005
60070032002009	60070036003055	60070025003002	60070030011007
60070032002040	60070036003010	60070025004023	60070030011022

60070030012012	60070032002038	60070033001063	60070035021025
60070030012015	60070032002026	60070033001043	60070035021059
60070030013016	60070032002060	60070033001059	60070036001018
60070030013017	60070032002022	60070033001000	60070036001020
60070030014015	60070032002007	60070033001064	60070036001000
60070030014003	60070032002045	60070033002005	60070036002049
60070030021021	60070032002039	60070033002029	60070036002030
60070030021036	60070032002044	60070033002011	60070036002000
60070030023001	60070032002035	60070033002023	60070036002037
60070030024005	60070032002055	60070033002007	60070036003126
60070030024008	60070032002004	60070033002036	60070036003137
60070031001009	60070032003005	60070033002020	60070036003045
60070031001012	60070032003036	60070033002003	60070036003029
60070031001011	60070032003033	60070033003034	60070036003044
60070031002006	60070032003048	60070033003048	60070036003005
60070031002011	60070032003001	60070033003019	60070036003031
60070031002013	60070032003038	60070033003029	60070036003163
60070031003006	60070032003008	60070033003008	60070036003152
60070031003002	60070032003049	60070033003007	60070036003042
60070031003003	60070032003002	60070033003016	60070036003040
60070031004002	60070032003004	60070033003018	60070036003107
60070031004004	60070032003027	60070033003054	60070036003039
60070031004008	60070032003010	60070033003053	60070036003046
60070031004001	60070032003000	60070033003049	60070036003073
60070032001004	60070033001039	60070033003022	60070036003146
60070032001002	60070033001029	60070033003064	60070036003155
60070032001011	60070033001001	60070033003023	60070036003145
60070032001001	60070033001040	60070033003003	60070037001013
60070032001023	60070033001044	60070033003027	60070037001000
60070032001022	60070033001061	60070033003005	60070037001012
60070032001000	60070033001071	60070033003045	60070037002027
60070032002066	60070033001028	60070033003017	60070037002084
60070032002054	60070033001031	60070033003024	60070037002015
60070032002041	60070033001045	60070033003014	60070037002080
60070032002046	60070033001015	60070033003021	60070037002043
60070032002034	60070033001002	60070033003013	60070037002032
60070032002056	60070033001009	60070034001004	60070037002058
60070032002006	60070033001046	60070034001011	60070037002068
60070032002027	60070033001062	60070034002049	60070037002072
60070032002023	60070033001066	60070034002014	60070037003007
60070032002012	60070033001048	60070034002032	60070037003002
60070032002063	60070033001003	60070034002025	60070037003017
60070032002001	60070033001035	60070034002040	60070037003011
60070032002067	60070033001021	60070034002027	60070037003003
60070032002064	60070033001013	60070034002050	60070037003001
60070032002030	60070033001034	60070034002045	60070037003015
60070032002043	60070033001014	60070035011023	60070037003016
60070032002047	60070033001030	60070035011020	60070037004001

60070037004003	61150410022003	61150411012032	60070030011003
60070037004006	61150410022012	61150411013027	60070033002022
60070037004014	61150410022006	61150411021037	60070033003039
60070037004011	61150410022020	61150411021011	60070034001001
60070037004005	61150410022011	61150411021039	60070035011027
61150410011008	61150410022009	61150411021009	60070036001003
61150410011005	61150410022008	61150411021012	60070036002026
61150410011007	61150410022016	61150411021047	60070036002029
61150410013014	61150410022014	61150411021002	60070036002002
61150410013002	61150410022017	61150411021038	60070036003138
61150410013005	61150410022021	61150411021016	60070036003141
61150410021019	61150410022004	61150411021007	60070036003154
61150410021005	61150410022000	61150411021005	60070036003139
61150410021022	61150410022001	61150411021031	60070036003151
61150410021002	61150410023002	60070026012011	60070036003143
61150410021045	61150410023007	60070026012007	61150410011004
61150410021048	61150411011112	60070026023012	61150411013029
61150410021001	61150411012033	60070028002014	

**Zip Codes:**

---

95901, 95914, 95917, 95918, 95928, 95935, 95938, 95948, 95958, 95962, 95965, 95966, 95968, 95974

According to the data available through the California Interactive Broadband Map:

331 locations have access equal to or less than 10 Mbps Down / 1 Mbps Up and 1,291 locations have access at less than 25 Mbps Down / 3 Mbps Up. This project will make speeds available of 100 Mbps downstream and 20 Mbps upstream.

The median household income of the project area is \$55,185.

There are 59 Community Anchor Institutions identified within the project area. None of these locations are listed as eligible or priority eligible.

There is no major infrastructure proposed in this Project.

The major equipment associated with this project is:

- High-capacity access points, generators, licensed microwave links.

Construction will take less than 18 months to complete.

The South Butte Project is a hybrid last-mile/middle mile fixed wireless deployment utilizing 9 existing towers and 2 new towers to deliver service to the households covered by this project.

Once completed, locations covered in this Project will have access to download speeds of 100 Mbps and upload speeds of 20 Mbps. Additional service tiers will be available.

Digital Path, Inc. believes this project to be categorically exempt from CEQA requirements based on the use of existing facilities and local building requirements.

Digital Path, Inc. is not disputing the California Interactive Broadband Map depiction of served status for the locations in this application.

Digital Path, Inc. is not seeking Ministerial Review.

The Middle-Mile component of this project will use licensed microwave links to interconnect the tower sites with an existing fiber connection. The Middle-Mile licensed microwave links are an indispensable part of the project due to the remoteness of the area and lack of available middle-mile connections. DigitalPath, Inc. accepts the open access requirements associated with the middle-mile component of this Project. Once the statewide open-access middle mile network becomes available, it will be connected to.