



TESLA

## CPUC Rate Design Forum DER Stakeholder Panel

Marc Kolb

[mkolb@tesla.com](mailto:mkolb@tesla.com)

12/11/2017

# MISSION

Accelerate the world's transition to **sustainable energy**

# A SUSTAINABLE FUTURE



Clean Electricity



Flexible, Resilient Grid



Sustainable Transport

## POWERPACK VALUE STREAMS



PEAK SHAVING



MICROGRID



LOAD SHIFTING



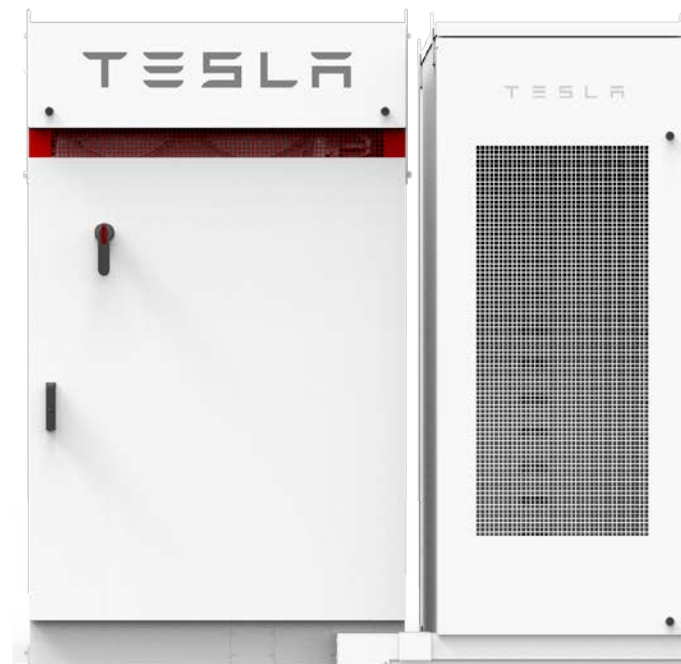
ANCILLARY SERVICES

DEMAND  
RESPONSE

CAPACITY FIRMING

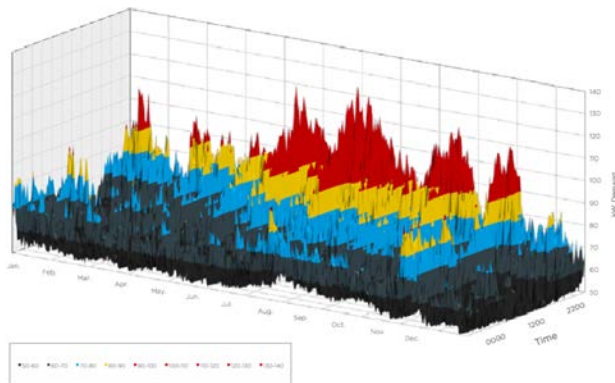


BACKUP

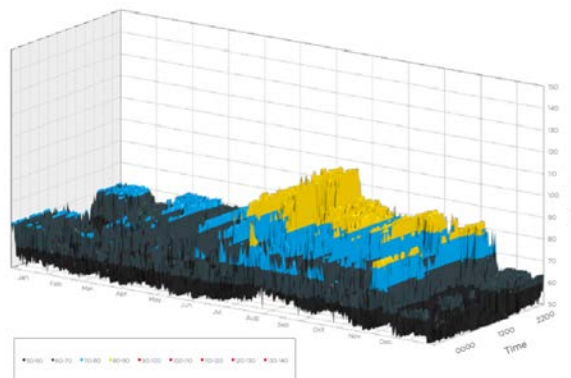
T&D  
INVESTMENT DEFERRAL

## REDUCE PEAK DEMAND CHARGES

Original Load Profile



Load Profile after Powerpack



Customer

Southern California  
BusinessPowerpack System Size  
100 kW / 420 kWh

Savings

Reduced peak demand by  
23% per month