



CPUC Public Agenda 3325

Thursday, October 31, 2013, 9:30 a.m.

San Francisco, CA



Commissioners:
Michael R. Peevey
Michel Peter Florio
Catherine J.K. Sandoval
Mark J. Ferron
Carla J. Peterman

www.cpuc.ca.gov





Safety and Emergency Information

- The restrooms are located at the far end of the lobby outside of the security screening area.
- In the event of an emergency, please calmly proceed out of the exits. There are four exits total. Two exits are in the rear and two exits are on either side of the public speakers area.
- In the event of an emergency and the building needs to be evacuated, if you use the back exit, please head out through the courtyard and down the front stairs across McAllister.
- If you use the side exits you will end up on Golden Gate Ave. Please proceed around the front of the building to Van Ness Ave and continue on down to the assembly point.
- Our assembly point is between the War Memorial Building and the Opera Building (House) which is on Van Ness Ave, located between McAllister and Grove.





Public Comment

- Per Resolution ALJ-252, any member of the public who wishes to address the CPUC about matters before the Commission must sign up with the Public Advisor's Office table before the meeting begins. If an individual has signed up using the electronic system on the Commission's website, they must check in with the Public Advisor's Office on the day of the meeting, by the sign-up deadline.
- Once called, each speaker has up to 3 minutes at the discretion of the Commission President, depending on the number of speakers the time limit may be reduced to 1 minute.
- A sign will be posted when 1 minute remains.
- A bell will ring when time has expired.
- At the end of the Public Comment Section, the Commission President will ask if there are any additional individuals who wish to speak. Individuals who wish to speak but did not sign up by the deadline, will be granted a maximum of one minute to make their comments.

The following items are NOT subject to Public Comment:

- Items: 14, 15, 16, 20, 25, 35 & 36
- All items on the Closed Session Agenda





Public Comment

- Per Resolution ALJ-252, any member of the public who wishes to address the CPUC about matters before the Commission must sign up with the Public Advisor's Office table before the meeting begins. If an individual has signed up using the electronic system on the Commission's website, they must check in with the Public Advisor's Office on the day of the meeting, by the sign-up deadline.
- Once called, each speaker has up to 2 minutes to address the Commission.
- A sign will be posted when 1 minute remains.
- A bell will ring when time has expired.
- At the end of the Public Comment Section, the Commission President will ask if there are any additional individuals who wish to speak. Individuals who wish to speak but did not sign up by the deadline, will be granted a maximum of one minute to make their comments.

The following items are NOT subject to Public Comment:

- Items: 14, 15, 16, 20, 25, 35 & 36
- All items on the Closed Session Agenda





Public Comment

- Per Resolution ALJ-252, any member of the public who wishes to address the CPUC about matters before the Commission must sign up with the Public Advisor's Office table before the meeting begins. If an individual has signed up using the electronic system on the Commission's website, they must check in with the Public Advisor's Office on the day of the meeting, by the sign-up deadline.
- Once called, each speaker has up to 1 minute to address the Commission.
- A bell will ring when time has expired.
- At the end of the Public Comment Section, the Commission President will ask if there are any additional individuals who wish to speak. Individuals who wish to speak but did not sign up by the deadline, will be granted a maximum of one minute to make their comments.
- **The following items are NOT subject to Public Comment:**
 - Items: 14, 15, 16, 20, 25, 35 & 36
 - All items on the Closed Session Agenda





Agenda Changes

- Items shown on the Consent Agenda will be taken up and voted on as a group in one of the first items of business of each CPUC meeting.
- Items on Today's Consent Agenda are: 1, 2, 7, 8, 9, 10, 11, 12, 14, 15, 16, 17, 18, 19, 20, 21, 22, 25, 27, 28, 29, 30, 31, 32, 33, 34, 35, 36, 37, 38, 39, 40, 41, 42 & 43
- Any Commissioner, with consent of the other Commissioners, may request an item from the Regular Agenda be moved to the Consent Agenda prior to the meeting.
- 49 from the Regular Agenda has been added to the Consent Agenda.
- Any Commissioner may request an item be removed from the Consent Agenda for discussion on the Regular Agenda prior to the meeting.
Item: None have been moved to the Regular Agenda.
- None have been withdrawn.
- The following items have been held to future Commission Meetings:

Held to 11/14/13: 3, 4, 5, 6, 13, 23, 24, 26, 44, 45, 46 & 46a





Regular Agenda

- Each item on the Regular Agenda (and its alternate if any) will be introduced by the assigned Commissioner or CPUC staff and discussed before it is moved for a vote.
- For each agenda item, a summary of the proposed action is included on the agenda; the CPUC's decision may, however, differ from that proposed.
- The complete text of every Proposed Decision or Draft Resolution is available for download on the CPUC's website: www.cpuc.ca.gov.
- Late changes to agenda items are available on the Escutia Table.





Regular Agenda – Transportation/Rail Safety Orders

Item #47 [12378] General Order for Roadway Worker Protections on California's Rail Transit Systems

R09-01-020 Order Instituting Rulemaking to Consider Roadway Worker Protections by Transit Agencies in California.

Quasi-Legislative

Comr. Peterman / Judge Kim

PROPOSED OUTCOME:

- Adopts General Order 175, which establishes California's new and comprehensive rail transit safety regulations.
- Orders the rail transit agencies to research and implement additional transit safety and warning technology for implementation to further improve worker (as well as public) safety on California's rail transit system.
- Adopts additional protective interim safeguards/rules than those previously proposed, in light of the recent fatal BART tragedy on October 19, 2013.
- Leaves the proceeding open so that the Commission may further examine and integrate any additional necessary enhancements to the General 175 following the current BART accident investigation.

SAFETY CONSIDERATIONS:

- The proposed GO 175 significantly enhances and promotes safe rail transit systems and provides effective protection for California's rail transit roadway workers.

ESTIMATED COST:

- None.





Commissioners' Reports





Management Reports





Regular Agenda – Management Reports and Resolutions

Item #48 [12468]

Report and Discussion by Safety and Enforcement Division on Recent Safety Program Activities





Southern California Edison Company (SCE) Pole Loading Study



Raymond Fugere, PE
Safety and Enforcement Division





Agenda

Objective: Provide an overview of SCE's pole loading study as required by Ordering Paragraph 17 of Decision 12-11-051

- Pole Basics
- Rules and Regulations
- Study Results
- Next Steps





Pole Basics

- More Than 4 Million Poles in CA
 - Pacific Gas and Electric Company (PG&E): 2.4 Million
 - Southern California Edison Company (SCE): 1.4 Million
 - San Diego Gas & Electric Company (SDG&E): 200K
- Poles Can Support:
 - Electric
 - Phone
 - Cable
 - Antennas
 - Fire Alarm Circuits





Pole Basics: Overloading

Basic Overloading : Strength of Material < Applied Loads

Overloading For GO 95: $\frac{\text{Strength of Material}}{\text{Required Safety Factor}} < \text{Applied Loads}$

Potential Causes of Overloading:

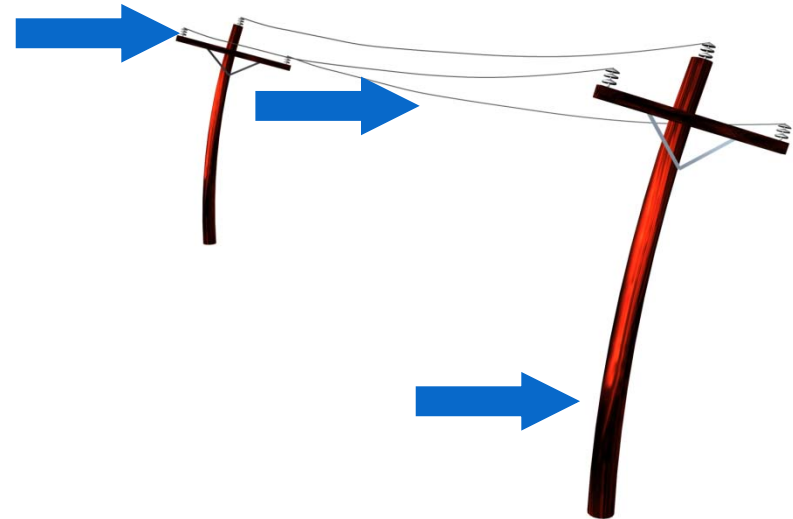
- Additional Facilities
- Poor Design
- Termites
- Root
- Woodpeckers
- Changes in Configuration





Rules and Regulations

- General Order 95 Rules:
 - Rule 43 - Temperature and Loading
 - Rule 44 - Safety Factors
 - Rule 48 - Strength of Materials
 - Rule 31.1 - Design, Construction and Maintenance





Ordering Paragraph 17 of Decision 12-11-051

- Required SCE to Perform Pole Study:
 - Random
 - Statistically Valid
 - Determine Level of Compliance
 - Submit results on July 31, 2013
- SCE:
 - Did a Strata Based Study
 - Eight “Groups”
 - Submitted Results to SED

High Fire Threat Areas

- GO 95 – Heavy Loading
- GO 95 – Light Loading
- SCE Higher Wind Area
- SCE Highest Wind Area

Non-High Fire Threat Areas

- GO 95 – Heavy Loading
- GO 95 – Light Loading
- SCE Higher Wind Area
- SCE Highest Wind Area





Results

High Fire Threat Areas

Sampled: 2085

Overload: 495

Percent: 23.7%

Non-High Fire Threat Areas

Sampled: 2921

Overload: 621

Percent: 21.3%

GO 95 –
Heavy
Loading
20.2%

GO 95 –
Light
Loading
19.8%

SCE
Higher
Wind
Area
29.6%

SCE
Highest
Wind
Area
50%

GO 95 –
Heavy
Loading
34.0%

GO 95 –
Light
Loading
17.0%

SCE
Higher
Wind
Area
23.0%

SCE
Highest
Wind
Area
51.9%





Safety and Enforcement Division Actions

- Reviewing Study
- Will Issue Recommendations
- Fire Safety OIR
- Malibu Settlements





Thank You!

Raymond Fugere
raymond.fugere@cpuc.ca.gov
Office: (213) 576-7015



www.cpuc.ca.gov





Regular Agenda – Management Reports and Resolutions

Item #48 [12468]

Report and Discussion by Safety and Enforcement Division on Recent Safety Program Activities





Management Reports





The CPUC Thanks You For Attending Today's Meeting

The Public Meeting is adjourned.

The next Public Meeting will be:

**November 14, 2013, at 9:30 a.m.
in San Francisco, CA**

